

**(4,4'-Dimethyl-2,2'-bipyridine- $\kappa^2N,N'$ )-diiodidomercury(II)**

Mohammad Yousefi,<sup>a</sup> Nasim Tadayon Pour,<sup>a</sup> Vahid Amani<sup>a\*</sup> and Hamid Reza Khavasi<sup>b</sup>

<sup>a</sup>Islamic Azad University, Shahr-e-Rey Branch, Tehran, Iran, and <sup>b</sup>Department of Chemistry, Shahid Beheshti University, Tehran 1983963113, Iran  
Correspondence e-mail: v\_amani2002@yahoo.com

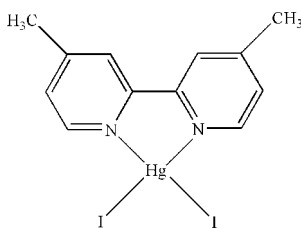
Received 5 September 2008; accepted 8 September 2008

Key indicators: single-crystal X-ray study;  $T = 298$  K; mean  $\sigma(\text{C}-\text{C}) = 0.015$  Å;  $R$  factor = 0.048;  $wR$  factor = 0.159; data-to-parameter ratio = 26.6.

In the molecule of the title compound,  $[\text{HgI}_2(\text{C}_{12}\text{H}_{12}\text{N}_2)]$ , the  $\text{Hg}^{\text{II}}$  atom is four-coordinated in a distorted tetrahedral configuration by two N atoms from the 4,4'-dimethyl-2,2'-bipyridine ligand and by two I atoms. There is a  $\pi$ - $\pi$  contact between the pyridine rings [centroid-centroid distance = 3.775 (6) Å].

**Related literature**

For related literature, see: Khalighi *et al.* (2008); Ahmadi *et al.* (2008); Khavasi *et al.* (2008); Freire *et al.* (1999); Chen *et al.* (2006); Htoon & Ladd (1976).

**Experimental***Crystal data*

$[\text{HgI}_2(\text{C}_{12}\text{H}_{12}\text{N}_2)]$

$M_r = 638.63$

Triclinic,  $P\bar{1}$

$a = 8.4214$  (9) Å

$b = 9.8391$  (10) Å

$c = 10.2983$  (10) Å

$\alpha = 69.383$  (8)°

$\beta = 88.448$  (8)°

$\gamma = 74.670$  (8)°

$V = 768.18$  (14) Å<sup>3</sup>

$Z = 2$

Mo  $K\alpha$  radiation

$\mu = 14.02$  mm<sup>-1</sup>  
 $T = 298$  (2) K

$0.38 \times 0.25 \times 0.12$  mm

*Data collection*

Bruker SMART CCD area-detector diffractometer

Absorption correction: multi-scan (SADABS; Sheldrick, 1998)

$T_{\text{min}} = 0.022$ ,  $T_{\text{max}} = 0.183$

8874 measured reflections

4123 independent reflections

3467 reflections with  $I > 2\sigma(I)$

$R_{\text{int}} = 0.091$

*Refinement*

$R[F^2 > 2\sigma(F^2)] = 0.048$

$wR(F^2) = 0.159$

$S = 0.95$

4123 reflections

155 parameters

H-atom parameters constrained

$\Delta\rho_{\text{max}} = 1.95$  e Å<sup>-3</sup>

$\Delta\rho_{\text{min}} = -1.38$  e Å<sup>-3</sup>

**Table 1**

Selected geometric parameters (Å, °).

Hg1—I1	2.6671 (9)	N1—Hg1	2.442 (8)
Hg1—I2	2.6885 (8)	N2—Hg1	2.402 (10)
I1—Hg1—I2	132.56 (3)	N2—Hg1—N1	67.3 (3)
N1—Hg1—I1	111.9 (2)	N2—Hg1—I1	104.9 (2)
N1—Hg1—I2	92.87 (19)	N2—Hg1—I2	122.2 (2)

Data collection: *SMART* (Bruker, 1998); cell refinement: *SAINTE* (Bruker, 1998); data reduction: *SAINTE*; program(s) used to solve structure: *SHELXTL* (Sheldrick, 2008); program(s) used to refine structure: *SHELXTL*; molecular graphics: *ORTEP-3 for Windows* (Farrugia, 1997); software used to prepare material for publication: *WinGX* (Farrugia, 1999).

We are grateful to the Islamic Azad University, Shahr-e-Rey Branch, for financial support.

Supplementary data and figures for this paper are available from the IUCr electronic archives (Reference: HK2525).

**References**

- Ahmadi, R., Khalighi, A., Kalateh, K., Amani, V. & Khavasi, H. R. (2008). *Acta Cryst.* **E64**, m1233.
- Bruker (1998). *SMART* and *SAINTE*. Bruker AXS Inc., Madison, Wisconsin, USA.
- Chen, W. T., Wang, M. S., Liu, X., Guo, G. C. & Huang, J. S. (2006). *Cryst. Growth Des.* **6**, 2289–2300.
- Farrugia, L. J. (1997). *J. Appl. Cryst.* **30**, 565.
- Farrugia, L. J. (1999). *J. Appl. Cryst.* **32**, 837–838.
- Freire, E., Baggio, S., Baggio, R. & Suescun, L. (1999). *J. Chem. Crystallogr.* **29**, 825–830.
- Htoon, S. & Ladd, M. F. C. (1976). *J. Cryst. Mol. Struct.* **6**, 55–58.
- Khalighi, A., Ahmadi, R., Amani, V. & Khavasi, H. R. (2008). *Acta Cryst.* **E64**, m1211–m1212.
- Khavasi, H. R., Abedi, A., Amani, V., Notash, B. & Safari, N. (2008). *Polyhedron*, **27**, 1848–1854.
- Sheldrick, G. M. (1998). *SADABS*. Bruker AXS, Madison, Wisconsin, USA.
- Sheldrick, G. M. (2008). *Acta Cryst.* **A64**, 112–122.

**supplementary materials**

*Acta Cryst.* (2008). E64, m1259 [ doi:10.1107/S1600536808028791 ]

## (4,4'-Dimethyl-2,2'-bipyridine- $\kappa^2N,N'$ )diiodidomercury(II)

M. Yousefi, N. Tadayon Pour, V. Amani and H. R. Khavasi

### Comment

Recently, we reported the syntheses and crystal structures of  $[Zn(5,5'\text{-dmbpy})Cl_2]$ , (II), (Khalighi *et al.*, 2008),  $[Cd(5,5'\text{-dmbpy})(\mu\text{-Cl})_2]_n$ , (III), (Ahmadi *et al.*, 2008) and  $\{[HgCl(dm4bt)]_2(\mu\text{-Cl})_2\}$ , (IV), (Khavasi *et al.*, 2008) [where 5,5'-dmbpy is 5,5'-dimethyl-2,2'-bipyridine and dm4bt is 2,2'-dimethyl-4,4' -bithiazole]. There are several  $Hg^{II}$  complexes, with formula,  $[HgI_2(N\text{-}N)]$ , such as  $[HgI_2(\text{bipy})]$ , (V),  $[HgI_2(\text{phen})]$ , (VI),  $[HgI_2(2,9\text{-dmphen})]$ , (VII), (Freire *et al.*, 1999),  $[HgI_2(\text{bipy})][HgI_2]$ , (VIII), (Chen *et al.*, 2006) and  $[HgI_2(\text{TMDA})]$ , (IX), (Htoon & Ladd, 1976) [where bipy is 2,2'-bipyridine, phen is 1,10-phenanthroline, dmphen is 2,9-dimethyl-1,10-phenanthroline and TMDA is tetramethylethylenediamine] have been synthesized and characterized by single-crystal X-ray diffraction methods. We report herein the synthesis and crystal structure of the title compound, (I).

In the title compound, (I), (Fig. 1), the  $Hg^{II}$  atom is four-coordinated in a distorted tetrahedral configuration by two N atoms from 4,4'-dimethyl-2,2'-bipyridine and two I atoms. The Hg—I and Hg—N bond lengths and angles (Table 1) are within normal ranges, as in (V) and (VI).

In the crystal structure, the  $\pi\text{-}\pi$  contact (Fig. 2) between the pyridine rings,  $Cg2\cdots Cg3^i$  [symmetry code: (i)  $1 - x, -y, -z$ , where Cg2 and Cg3 are the centroids of the rings (N1/C1–C3/C5/C6) and (N2/C7–C9/C11/C12), respectively] may stabilize the structure, with centroid–centroid distance of 3.775 (6) Å.

### Experimental

For the preparation of the title compound, (I), a solution of 4,4'-dimethyl-2,2'-bipyridine (0.25 g, 1.33 mmol) in methanol (20 ml) was added to a solution of  $HgI_2$  (0.61 g, 1.33 mmol) in acetonitrile (50 ml) and the resulting colorless solution was stirred for 20 min at room temperature, and then it was left to evaporate slowly. After one week, colorless block crystals of (I) were isolated (yield; 0.61 g, 71.8%).

### Refinement

H atoms were positioned geometrically, with C—H = 0.93 and 0.96 Å for aromatic and methyl H, respectively, and constrained to ride on their parent atoms with  $U_{iso}(H) = 1.2U_{eq}(C)$ .

## Figures

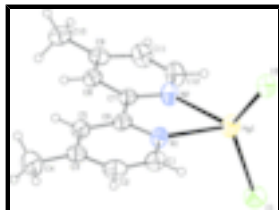


Fig. 1. The molecular structure of the title molecule, with the atom-numbering scheme. Displacement ellipsoids are drawn at the 40% probability level.

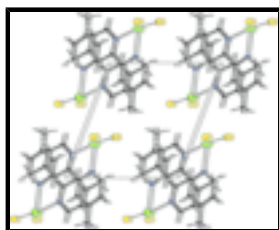


Fig. 2. A packing diagram of the title compound.

## (4,4'-Dimethyl-2,2'-bipyridine- $\kappa^2N,N'$ )diiodidomercury(II)

### Crystal data

[HgI<sub>2</sub>(C<sub>12</sub>H<sub>12</sub>N<sub>2</sub>)]

$M_r = 638.63$

Triclinic, *P* $\bar{1}$

Hall symbol: -P 1

$a = 8.4214$  (9) Å

$b = 9.8391$  (10) Å

$c = 10.2983$  (10) Å

$\alpha = 69.383$  (8)°

$\beta = 88.448$  (8)°

$\gamma = 74.670$  (8)°

$V = 768.18$  (14) Å<sup>3</sup>

$Z = 2$

$F_{000} = 568$

$D_x = 2.761$  Mg m<sup>-3</sup>

Mo  $K\alpha$  radiation

$\lambda = 0.71073$  Å

Cell parameters from 2145 reflections

$\theta = 2.1$ – $29.2$ °

$\mu = 14.02$  mm<sup>-1</sup>

$T = 298$  (2) K

Block, colourless

$0.38 \times 0.25 \times 0.12$  mm

### Data collection

Bruker SMART CCD area-detector diffractometer

Radiation source: fine-focus sealed tube

Monochromator: graphite

$T = 298$ (2) K

$\varphi$  and  $\omega$  scans

Absorption correction: multi-scan (SADABS; Sheldrick, 1998)

$T_{\min} = 0.022$ ,  $T_{\max} = 0.183$

8874 measured reflections

4123 independent reflections

3467 reflections with  $I > 2\sigma(I)$

$R_{\text{int}} = 0.091$

$\theta_{\text{max}} = 29.2$ °

$\theta_{\text{min}} = 2.1$ °

$h = -11 \rightarrow 11$

$k = -13 \rightarrow 13$

$l = -14 \rightarrow 14$

Refinement

Refinement on $F^2$	Hydrogen site location: inferred from neighbouring sites
Least-squares matrix: full	H-atom parameters constrained
$R[F^2 > 2\sigma(F^2)] = 0.048$	$w = 1/[\sigma^2(F_o^2) + (0.108P)^2 + 1.3499P]$
$wR(F^2) = 0.159$	where $P = (F_o^2 + 2F_c^2)/3$
$S = 0.95$	$(\Delta/\sigma)_{\max} = 0.002$
4123 reflections	$\Delta\rho_{\max} = 1.95 \text{ e } \text{\AA}^{-3}$
155 parameters	$\Delta\rho_{\min} = -1.38 \text{ e } \text{\AA}^{-3}$
Primary atom site location: structure-invariant direct methods	Extinction correction: SHELXTL (Sheldrick, 1998), $F_c^* = kF_c[1+0.001xF_c^2\lambda^3/\sin(2\theta)]^{-1/4}$
Secondary atom site location: difference Fourier map	Extinction coefficient: 0.0071 (13)

Special details

**Geometry.** All e.s.d.'s (except the e.s.d. in the dihedral angle between two l.s. planes) are estimated using the full covariance matrix. The cell e.s.d.'s are taken into account individually in the estimation of e.s.d.'s in distances, angles and torsion angles; correlations between e.s.d.'s in cell parameters are only used when they are defined by crystal symmetry. An approximate (isotropic) treatment of cell e.s.d.'s is used for estimating e.s.d.'s involving l.s. planes.

**Refinement.** Refinement of  $F^2$  against ALL reflections. The weighted  $R$ -factor  $wR$  and goodness of fit  $S$  are based on  $F^2$ , conventional  $R$ -factors  $R$  are based on  $F$ , with  $F$  set to zero for negative  $F^2$ . The threshold expression of  $F^2 > \sigma(F^2)$  is used only for calculating  $R$ -factors(gt) *etc.* and is not relevant to the choice of reflections for refinement.  $R$ -factors based on  $F^2$  are statistically about twice as large as those based on  $F$ , and  $R$ -factors based on ALL data will be even larger.

Fractional atomic coordinates and isotropic or equivalent isotropic displacement parameters ( $\text{\AA}^2$ )

	$x$	$y$	$z$	$U_{\text{iso}}^*/U_{\text{eq}}$
Hg1	0.31760 (5)	0.15247 (5)	0.30109 (4)	0.05970 (19)
I1	0.03155 (9)	0.31134 (10)	0.35551 (9)	0.0704 (2)
I2	0.63357 (8)	0.13618 (9)	0.35681 (7)	0.0594 (2)
N1	0.3481 (10)	0.2223 (10)	0.0514 (8)	0.0520 (16)
N2	0.2438 (12)	-0.0160 (12)	0.2073 (9)	0.0595 (19)
C1	0.3943 (12)	0.3461 (12)	-0.0232 (12)	0.058 (2)
H1	0.4209	0.4042	0.0227	0.069*
C2	0.4037 (14)	0.3905 (12)	-0.1657 (13)	0.064 (3)
H2	0.4374	0.4763	-0.2141	0.077*
C3	0.3630 (12)	0.3066 (10)	-0.2355 (10)	0.053 (2)
C4	0.368 (2)	0.3537 (19)	-0.3901 (13)	0.080 (4)
H4A	0.2607	0.3701	-0.4313	0.096*
H4B	0.4460	0.2758	-0.4127	0.096*
H4C	0.4015	0.4454	-0.4256	0.096*
C5	0.3166 (12)	0.1780 (10)	-0.1574 (9)	0.0512 (18)
H5	0.2901	0.1178	-0.2009	0.061*

## supplementary materials

---

C6	0.3098 (10)	0.1393 (10)	-0.0149 (9)	0.0461 (16)
C7	0.2537 (10)	0.0050 (9)	0.0721 (9)	0.0438 (15)
C8	0.2150 (11)	-0.0932 (10)	0.0177 (10)	0.0488 (17)
H8	0.2260	-0.0777	-0.0762	0.059*
C9	0.1602 (11)	-0.2137 (10)	0.1003 (11)	0.0525 (19)
C10	0.1200 (14)	-0.3201 (12)	0.0393 (13)	0.065 (2)
H10A	0.2170	-0.3670	0.0034	0.079*
H10B	0.0348	-0.2648	-0.0346	0.079*
H10C	0.0825	-0.3962	0.1103	0.079*
C11	0.1411 (15)	-0.2305 (14)	0.2394 (12)	0.065 (3)
H11	0.1004	-0.3078	0.2981	0.078*
C12	0.1831 (16)	-0.1319 (15)	0.2875 (11)	0.066 (3)
H12	0.1698	-0.1438	0.3805	0.079*

### Atomic displacement parameters ( $\text{\AA}^2$ )

	$U^{11}$	$U^{22}$	$U^{33}$	$U^{12}$	$U^{13}$	$U^{23}$
Hg1	0.0532 (2)	0.0783 (3)	0.0614 (3)	-0.02592 (18)	0.01400 (15)	-0.0362 (2)
I1	0.0537 (4)	0.0824 (5)	0.0729 (4)	-0.0159 (3)	0.0167 (3)	-0.0280 (4)
I2	0.0539 (3)	0.0771 (4)	0.0543 (3)	-0.0294 (3)	0.0096 (2)	-0.0241 (3)
N1	0.056 (4)	0.058 (4)	0.049 (3)	-0.022 (3)	0.010 (3)	-0.022 (3)
N2	0.063 (5)	0.077 (5)	0.047 (4)	-0.029 (4)	0.011 (3)	-0.026 (4)
C1	0.054 (5)	0.052 (5)	0.074 (6)	-0.023 (4)	0.005 (4)	-0.025 (4)
C2	0.061 (5)	0.047 (5)	0.079 (7)	-0.021 (4)	0.010 (5)	-0.013 (4)
C3	0.054 (5)	0.044 (4)	0.056 (5)	-0.013 (3)	0.006 (4)	-0.012 (3)
C4	0.089 (9)	0.089 (9)	0.056 (5)	-0.033 (7)	0.013 (5)	-0.013 (6)
C5	0.057 (5)	0.048 (4)	0.048 (4)	-0.015 (4)	0.009 (3)	-0.016 (3)
C6	0.041 (4)	0.044 (4)	0.052 (4)	-0.011 (3)	0.013 (3)	-0.017 (3)
C7	0.039 (3)	0.042 (3)	0.048 (4)	-0.010 (3)	0.008 (3)	-0.016 (3)
C8	0.047 (4)	0.048 (4)	0.053 (4)	-0.014 (3)	0.012 (3)	-0.020 (3)
C9	0.043 (4)	0.048 (4)	0.061 (5)	-0.012 (3)	0.004 (3)	-0.014 (3)
C10	0.067 (5)	0.049 (5)	0.078 (6)	-0.014 (4)	0.010 (5)	-0.021 (4)
C11	0.071 (6)	0.070 (6)	0.060 (5)	-0.040 (5)	0.007 (5)	-0.013 (5)
C12	0.075 (7)	0.079 (7)	0.050 (4)	-0.040 (5)	0.015 (4)	-0.017 (4)

### Geometric parameters ( $\text{\AA}$ , $^\circ$ )

Hg1—I1	2.6671 (9)	C6—N1	1.334 (12)
Hg1—I2	2.6885 (8)	C6—C7	1.498 (12)
N1—Hg1	2.442 (8)	C7—N2	1.337 (12)
N2—Hg1	2.402 (10)	C7—C8	1.383 (13)
C1—N1	1.342 (13)	C8—C9	1.378 (13)
C1—C2	1.382 (17)	C8—H8	0.9300
C1—H1	0.9300	C9—C11	1.392 (16)
C2—C3	1.377 (17)	C9—C10	1.506 (16)
C2—H2	0.9300	C10—H10A	0.9600
C3—C5	1.389 (13)	C10—H10B	0.9600
C3—C4	1.497 (16)	C10—H10C	0.9600
C4—H4A	0.9600	C11—C12	1.357 (18)

C4—H4B	0.9600	C11—H11	0.9300
C4—H4C	0.9600	C12—N2	1.366 (15)
C5—C6	1.384 (12)	C12—H12	0.9300
C5—H5	0.9300		
I1—Hg1—I2	132.56 (3)	C6—C5—C3	120.2 (9)
N1—Hg1—I1	111.9 (2)	C6—C5—H5	119.7
N1—Hg1—I2	92.87 (19)	C3—C5—H5	120.2
N2—Hg1—N1	67.3 (3)	N1—C6—C5	121.6 (8)
N2—Hg1—I1	104.9 (2)	N1—C6—C7	116.6 (8)
N2—Hg1—I2	122.2 (2)	C5—C6—C7	121.7 (8)
C1—N1—Hg1	122.2 (7)	N2—C7—C8	121.2 (8)
C6—N1—Hg1	119.2 (6)	N2—C7—C6	116.1 (8)
C6—N1—C1	118.6 (8)	C8—C7—C6	122.6 (8)
C7—N2—Hg1	120.8 (7)	C9—C8—C7	121.0 (9)
C7—N2—C12	117.4 (9)	C9—C8—H8	119.4
C12—N2—Hg1	121.7 (7)	C7—C8—H8	119.6
N1—C1—C2	122.5 (10)	C8—C9—C11	117.7 (10)
N1—C1—H1	118.7	C8—C9—C10	120.2 (10)
C2—C1—H1	118.8	C11—C9—C10	122.1 (9)
C3—C2—C1	119.5 (10)	C9—C10—H10A	109.2
C3—C2—H2	120.1	C9—C10—H10B	109.6
C1—C2—H2	120.4	H10A—C10—H10B	109.5
C2—C3—C5	117.6 (10)	C9—C10—H10C	109.6
C2—C3—C4	120.8 (11)	H10A—C10—H10C	109.5
C5—C3—C4	121.6 (11)	H10B—C10—H10C	109.5
C3—C4—H4A	109.3	C12—C11—C9	118.7 (10)
C3—C4—H4B	109.5	C12—C11—H11	120.7
H4A—C4—H4B	109.5	C9—C11—H11	120.6
C3—C4—H4C	109.6	N2—C12—C11	123.8 (10)
H4A—C4—H4C	109.5	N2—C12—H12	118.1
H4B—C4—H4C	109.5	C11—C12—H12	118.2
C1—N1—Hg1—I1	79.7 (8)	C5—C6—N1—Hg1	176.7 (6)
C1—N1—Hg1—I2	-58.9 (7)	C7—C6—N1—Hg1	-1.4 (10)
C1—N1—Hg1—N2	177.2 (8)	C5—C6—N1—C1	-0.1 (13)
C6—N1—Hg1—I1	-96.9 (7)	C7—C6—N1—C1	-178.1 (8)
C6—N1—Hg1—I2	124.5 (7)	N1—C6—C7—N2	1.6 (11)
C6—N1—Hg1—N2	0.6 (7)	C5—C6—C7—N2	-176.5 (9)
C7—N2—Hg1—I1	108.1 (7)	N1—C6—C7—C8	-178.0 (8)
C7—N2—Hg1—I2	-78.2 (8)	C5—C6—C7—C8	4.0 (12)
C7—N2—Hg1—N1	0.2 (7)	C6—C7—N2—Hg1	-1.0 (10)
C12—N2—Hg1—I1	-68.7 (9)	C8—C7—N2—Hg1	178.6 (6)
C12—N2—Hg1—I2	104.9 (9)	C6—C7—N2—C12	176.0 (9)
C12—N2—Hg1—N1	-176.6 (10)	C8—C7—N2—C12	-4.5 (14)
C2—C1—N1—C6	-0.1 (15)	N2—C7—C8—C9	1.9 (13)
C2—C1—N1—Hg1	-176.7 (8)	C6—C7—C8—C9	-178.6 (8)
N1—C1—C2—C3	0.7 (16)	C7—C8—C9—C11	1.7 (13)
C1—C2—C3—C5	-1.2 (16)	C7—C8—C9—C10	-179.5 (8)
C1—C2—C3—C4	178.6 (11)	C8—C9—C11—C12	-2.5 (16)

## supplementary materials

---

C2—C3—C5—C6	1.1 (14)	C10—C9—C11—C12	178.7 (11)
C4—C3—C5—C6	-178.7 (10)	C9—C11—C12—N2	-0.1 (19)
C3—C5—C6—N1	-0.5 (14)	C11—C12—N2—Hg1	-179.4 (10)
C3—C5—C6—C7	177.4 (8)	C11—C12—N2—C7	3.6 (18)



Fig. 1

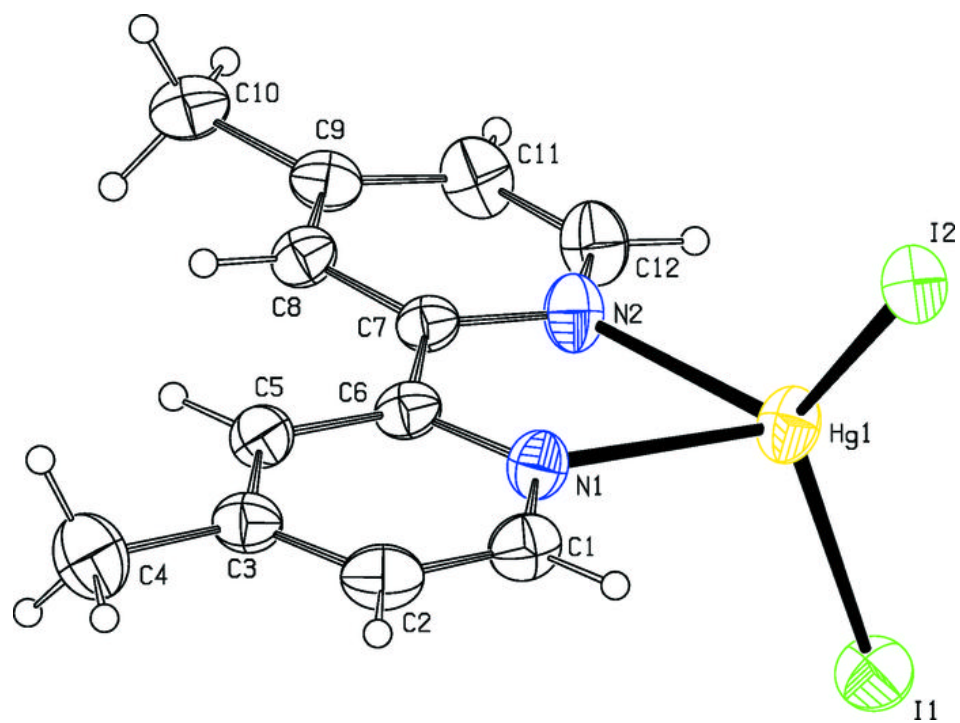


Fig. 2

